

## ALUMAGUARD® FAMILY OF PRODUCTS

### ALUMAGUARD®

The 'original', *Alumaguard®* was *Polyguard's* initial offering for exterior weatherproofing in 1997 to replace failing mastic/fab/mastic installations and hard to seal metal jacket installations on exterior duct or piping applications. A high strength, multi-layer polyester laminate with natural aluminum laminated to our proprietary rubberized bitumen compound. The natural tackiness of rubberized asphalt allows *Alumaguard* to self-adhere to the substrate. Rubberized asphalt has the ability to flow together if punctured giving *Alumaguard* self-healing properties as well. Together with a true *Zero Perm* rating and excellent elongation, *Alumaguard* remains the standard by which all other cladding systems are measured.

### ALUMAGUARD® LITE

In 2006 *Polyguard* introduced *Alumaguard® Lite* to meet the need for a lightweight high strength cladding material incorporating acrylic adhesive that can be effective in cold weather applications. Available in smooth silver and silver embossed, *Alumaguard Lite* meets ASTM E84 testing requirements for indoor applications. It offers true *Zero Perm* performance. Due to its lightweight, *Alumaguard Lite* is recommended for use as the bottom layer on *Alumaguard* exterior duct applications. This eliminates the extra cost associated with pinning the original *Alumaguard* membrane.

### ALUMAGUARD® ALL-WEATHER

In 2007, *Polyguard* introduced *Alumaguard All-Weather*, a truly innovative concept which combines the best attribute of the original *Alumaguard*, its' self-healing characteristic, with the cold-weather applicability of *Alumaguard Lite*. *Alumaguard All-Weather* is a multi-ply laminate film coated with rubberized asphalt to which a metalized film coated with cold-weather acrylic adhesive is laminated. This hybrid product is lighter than *Alumaguard* so it can be used completely around exterior ductwork with no pinning required for the underside of the duct.

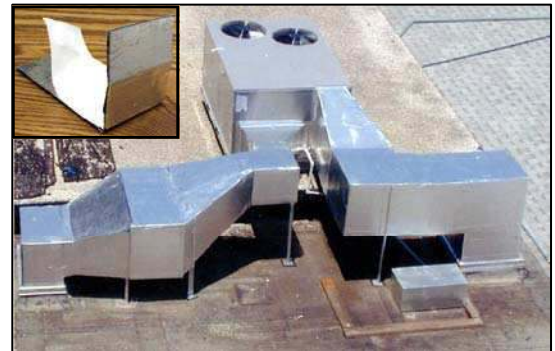
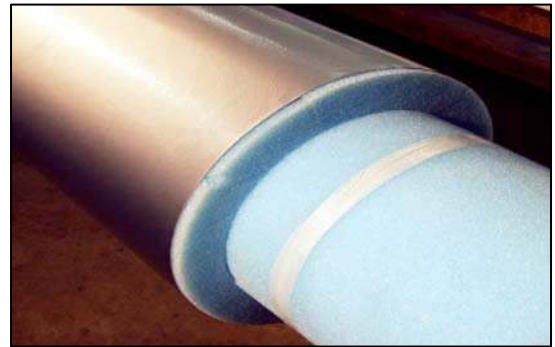
### ALUMAGUARD® COOL WRAP

In 2012 *Polyguard* introduced its' *Cool Wrap* bright white high performance surface finish. Available on *Alumaguard*, *Alumaguard All-Weather* and *Alumaguard Lite*, the *Cool Wrap* finish meets the same reflectivity and thermal emittance criteria used in defining Cool Roofs. It exceeds the California Title 24 requirements of greater than 75% Emissivity and Reflectivity as well as the Cool Roof Rating Council (CRRC) initial requirements. It can be considered a LEED point contributor to Energy and Atmosphere Credit 1. The bright white matte *Cool Wrap* finish has been tested and been shown to be highly UV and weather resistant.

Refer to the individual product data sheets for the *Alumaguard* product family at:

<http://www.polyguardmechanical.com>

X:/Lit/Mech/2013/Alumaguard Family.doc R-8-23-13



P.O. Box 755  
Ennis, TX 75120  
PH: (214) 515-5000  
FX: (972) 875-9425

This information is based on our best knowledge, but POLYGUARD cannot guarantee the results to be obtained.

Proud Member of  
**NIA** National Insulation  
Association®

[www.polyguard.com/mechanical](http://www.polyguard.com/mechanical)