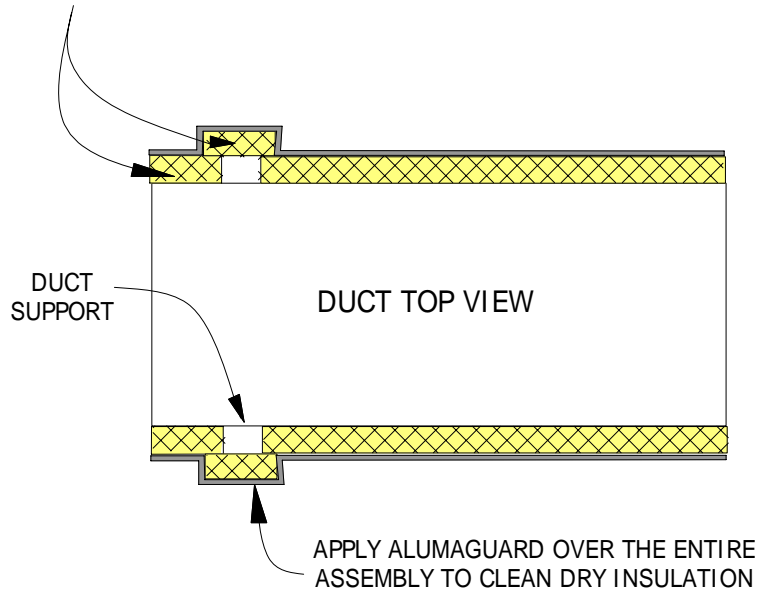
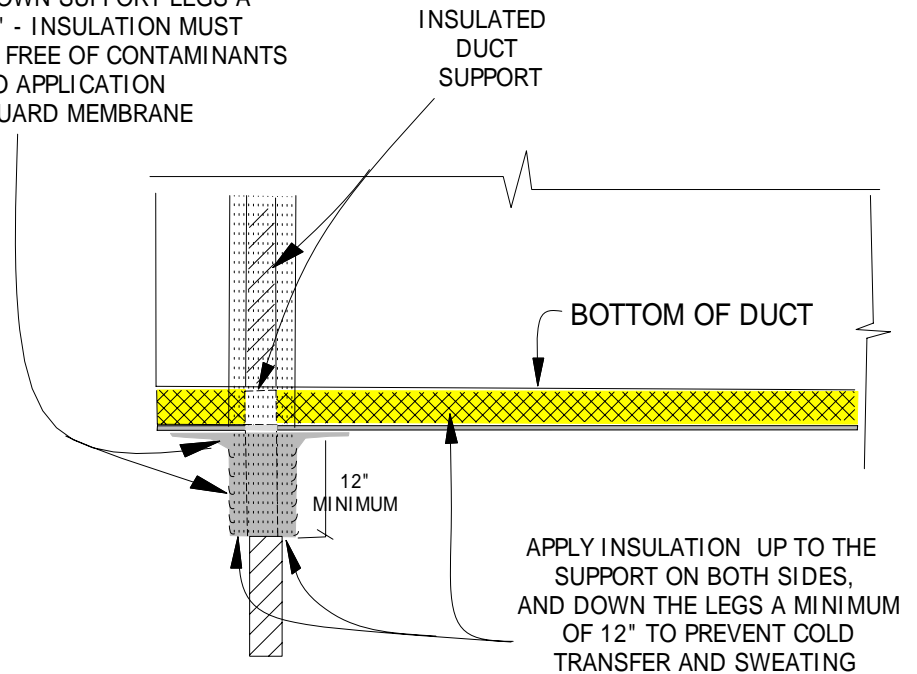


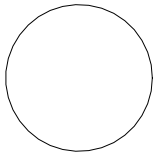
INSULATE UP TO THE SUPPORT ON BOTH SIDES THEN PLACE ANOTHER PIECE OVER SUPPORTS LAPPING ON TO THE PREVIOUS PLACED INSULATION



APPLY ALUMAGUARD OVER THE ENTIRE ASSEMBLY TO ENCAPSULATE THE INSULATION SYSTEM - AND DOWN SUPPORT LEGS A MINIMUM OF 12" - INSULATION MUST BE CLEAN, DRY AND FREE OF CONTAMINANTS PRIOR TO APPLICATION OF ALUMAGUARD MEMBRANE



When it is not possible to lift a duct off the rooftop supports, it is necessary to incorporate the support system into the insulation system by encapsulating the supports with insulation. This same system must be used if duct supports are screwed onto the ductwork



SECTION @ INSULATING DUCT ON SUPPORTS DETAIL 2

POLYGUARD PRODUCTS, INC. 2011

(NOT TO SCALE)

Polyguard Products, Inc.
P.O. Box 755 - Ennis, TX 75119
Phone: 214-515-5000 Fax: 972-875-9425

Web Site - www.polyguardproducts.com

x:\u\sl\nd\undersell\2007\Mechanical\Alumaguard\81insulatingductonsupportsdetail2

Polyguard

The information provided is based on data and knowledge considered to be true and accurate and is offered for the users' consideration, investigation and verification, but we do not warrant the results to be obtained. Please read all data sheets, statements, recommendations or suggestions in conjunction with our conditions of sale, which apply to all goods supplied by us.