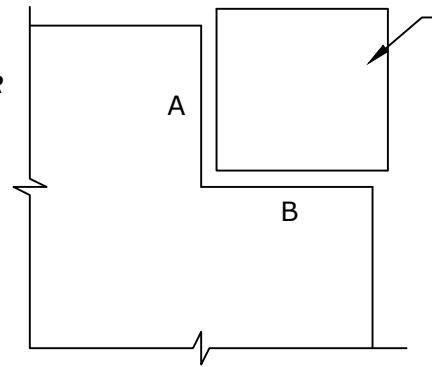
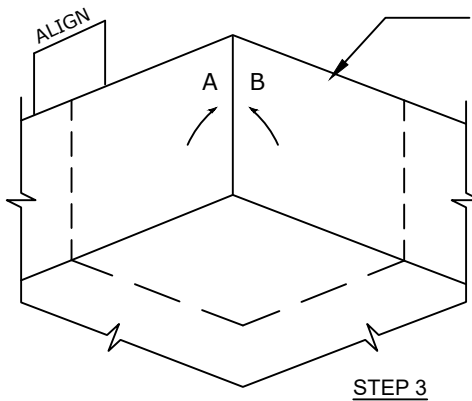


REFERENCE 650 MEMBRANE BOOT FOR UNDERSLAB INSIDE CORNER DETAIL

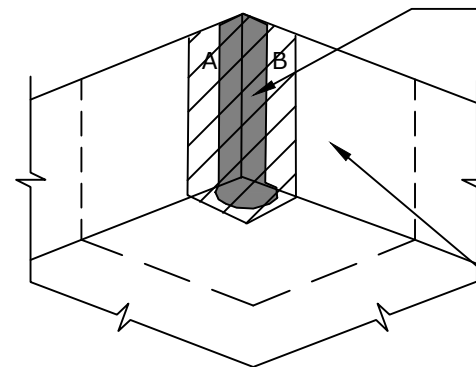
**NOTE:**  
**PURCHASE PREFORMED BOOTS OR YOU CAN FIELD FABRICATE USING 650 MEMBRANE BOOT FOR UNDERSLAB INSIDE CORNER DETAIL - BUT THIS STEP IS A CRITICAL STEP THAT MUST BE DONE PRIOR TO PLACING THE UNDERSLAB MEMBRANE - OMITTING THIS STEP VOIDS THE WARRANTY**



CUT AND REMOVE A SQUARE PIECE OF UNDERSLAB MEMBRANE FROM THE END CORNER. CUTOUT IS DETERMINED BY THE HEIGHT OF THE CONCRETE FORM. (EX: 12" FORM WOULD BE A 12" X 12" CUT OUT) DIMENSION THE STARTING POINT OF EACH CUT FROM THE CORNER, AND ALONG AN EDGE, A DISTANCE EQUAL TO THE HEIGHT OF THE VERTICAL LEG OF THE BOOT.



POSITION THE CUT UNDERSLAB MEMBRANE INTO THE CORNER AND OVER THE BOOT SO THE A AND B EDGES MEET IN THE VERTICAL LEG OF THE BOOT. FORM-FIT THE PIECE TO THE CONTOURS OF THE CORNER. CREASE THE UNDERSLAB MATERIAL TO ESTABLISH A CONFORMING SHAPE. AFTER CREASING, FOLD THE PIECE BACK, REMOVE THE RELEASE PAPER FROM THE HORIZONTAL LEG OF THE BOOT, THEN OVERLAY AND PRESS THE HORIZONTAL LEG INTO THE BOOT. REPEAT FOR EACH VERTICAL LEG.



PREPARE THE FABRIC ALONG THE A AND B EDGES WITH 650 LT LIQUID ADHESIVE OR CALIFORNIA SEALANT APPLIED AT A RATE OF 50 - 75 SF/GAL. SEAL THE A AND B EDGES AND BOTTOM CORNER USING A MINIMUM 90 MIL THICKNESS BY 2" WIDE APPLICATION OF LM-95 TROWELED ONTO EACH LEG AND JOINED AT THE INTERSECTING PLANES.

CUT AND APPLY FABRIC TAPE TIGHTLY OVER THE CURED LM-95 AND UNDERSLAB MEMBRANE - PREPARE THE FABRIC WITH 650 LT LIQUID ADHESIVE OR CALIFORNIA SEALANT APPLIED AT A RATE OF 50 - 75 SF/GAL.

**US11 SECTION@ US INSIDE CORNER DETAIL**

© POLYGUARD PRODUCTS, INC.

The information provided is based on data and knowledge considered to be true and accurate and is offered for the users' consideration, investigation and verification, but we do not warrant the results to be obtained. Please read all data sheets, statements, recommendations or suggestions in conjunction with our conditions of sale, which apply to all goods supplied by us.	NOT TO SCALE
	EFFECTIVE DATE: 02/01/2022
	SUPERCEDES: 07/22/2021