

PRM APPLIED TO SUBSTRATE PREPARED WITH 650 LT LIQUID ADHESIVE OR CALIFORNIA SEALANT AT A RATE OF 250 - 300 SF/GAL OR 650 WB LIQUID ADHESIVE AT A RATE OF 350 - 400 SF/GAL

TOTALFLOW HIGH CAPACITY PERIMETER DRAIN - FABRIC FACING BACKFILL AND CONNECTS TO THE POLYFLOW 15 OR 15P SHEET MOLDED DRAIN CONTINUED UP THE WALL - OPTIONAL

POLYFLOW 15 OR 15P SHEET MOLDED DRAIN FABRIC FACING BACKFILL - PRIMARILY FOR PROTECTION OF THE MEMBRANE - OPTIONAL

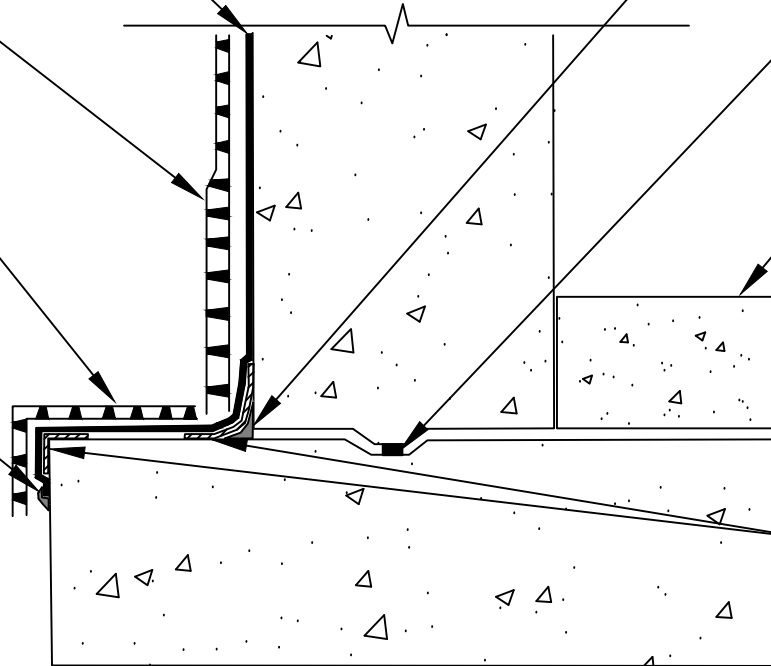
DETAIL SEALANT PW OR LM-95 LIQUID MEMBRANE APPLIED TO PRM TERMINAL EDGE

3/4" FILLET OF DETAIL SEALANT PW OR LM-95 LIQUID MEMBRANE APPLIED TO INSIDE CORNERS VERTICALLY AND HORIZONTALLY TO RAW CONCRETE - ALLOW DETAIL SEALANT PW TO CURE FOR 2 HOURS PRIOR TO SHEET APPLICATION

WATERSTOP PER MANUFACTURERS RECOMMENDATIONS - BY OTHERS

TOP OF INTERIOR FLOOR HEIGHT 12" AND UNDER FROM TOP OF FOOTER - WATERPROOF AS SHOWN - IF FOOTER IS POURED IN PLACE FOOTER MEMBRANE MUST BE CARRIED OUT 12" AND TERMINATED WITH TERMINATION BAR AND SEALED WITH DETAIL SEALANT PW OR LM-95

12" STRIP OF DETAIL TAPE APPLIED TO INSIDE AND OUTSIDE CORNERS - PREPARE SUBSTRATE WITH 650 LT LIQUID ADHESIVE OR CALIFORNIA SEALANT AT A RATE OF 250 - 300 SF/GAL OR 650 WB LIQUID ADHESIVE AT A RATE OF 350 - 400 SF/GAL



SECTION @ FOOTER WATERPROOFING - TOP OF INTERIOR FLOOR IS 12" AND UNDER FROM TOP OF FOOTER

PRM9

SPECIAL NOTE: IF ADHESIVE IS REQUIRED FOR SEAMS OR ENDLAPS DO NOT USE 650 WB LIQUID ADHESIVE

© POLYGUARD PRODUCTS, INC.
MATERIALS SEPARATED FOR CLARITY