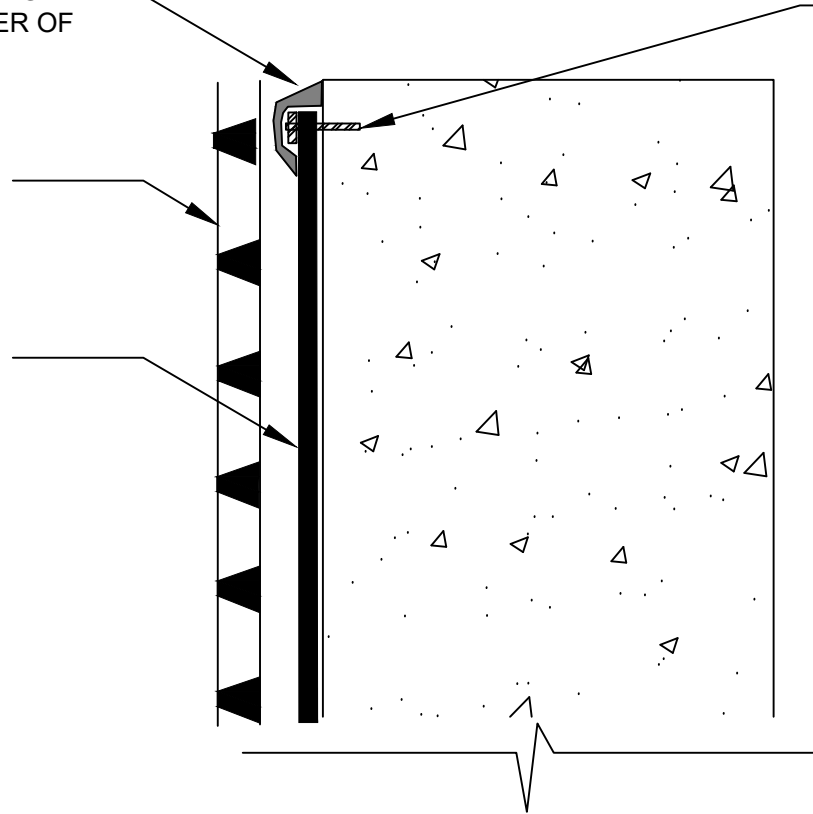


DETAIL SEALANT PW OR LM-95  
APPLIED TO THE TOP OF THE  
TERMINATION BAR AND COVERING  
MINIMUM 1/8" BEYOND PERIMETER OF  
FASTENER HEADS

1/8" X 1" METAL TERMINATION BAR  
FASTENED AT 8" SPACING AND 2"  
FROM EACH END - TERM BAR  
RECOMMENDED BY POLYGUARD

POLYFLOW 15 OR 15P MOLDED  
SHEET DRAIN - FABRIC FACING  
BACKFILL - OPTIONAL

PRM APPLIED TO SUBSTRATE  
PREPARED WITH 650 LT LIQUID  
ADHESIVE OR CALIFORNIA  
SEALANT AT A RATE OF 250 -  
300 SF/GAL OR 650 WB LIQUID  
ADHESIVE AT A RATE OF 350  
TO 400 SF/GAL



## SECTION @ TOP OF WALL TERMINATION

**SPECIAL NOTE: IF ADHESIVE IS REQUIRED FOR  
SEAMS OR ENDLAPS DO NOT USE 650 WB  
LIQUID ADHESIVE**

© POLYGUARD PRODUCTS, INC.  
MATERIALS SEPARATED FOR CLARITY

The information provided is based on data and knowledge considered to be true and accurate and is offered for the users' consideration, investigation and verification, but we do not warrant the results to be obtained. Please read all data sheets, statements, recommendations or suggestions in conjunction with our conditions of sale, which apply to all goods supplied by us.	NOT TO SCALE
	EFFECTIVE DATE: 07/01/2019
	SUPERCEDES: 11/26/2014