

DETAIL SEALANT PW OR LM-95 LIQUID MEMBRANE APPLIED TO THE TOP EDGE OF TERMINATION BAR AND TO COVER MINIMUM 1/8" BEYOND PERIMETER OF FASTENER HEADS

1/8" X 1" METAL TERMINATION BAR FASTENED AT 8" SPACING AND 2" FROM EACH END BUT NOT ACROSS THE JOINT - BY OTHERS

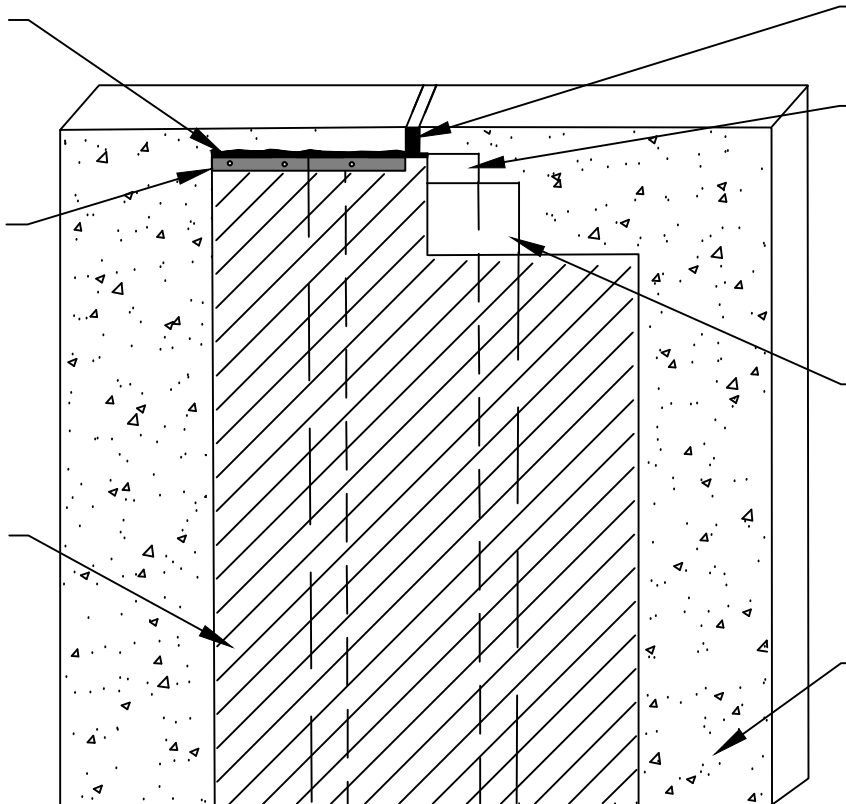
FIELD SHEET OF PRM APPLIED OVER THE 12" STRIP OF DETAIL TAPE - PREPARE SUBSTRATE WITH 650 LT LIQUID ADHESIVE OR CALIFORNIA SEALANT AT A RATE OF 250 - 300 SF/GAL OR 650 WB LIQUID ADHESIVE AT A RATE OF 350 TO 400 SF/GAL

BACKER ROD AND COMPATIBLE SEALANT - BY OTHERS

8" STRIP OF DETAIL TAPE INVERTED OVER EXPANSION JOINT ADHESIVE SIDE FACING OUTWARD

12" STRIP OF DETAIL TAPE CENTERED OVER ADHESIVE SIDE OF 8" INVERTED PIECE AND ADHERED - PREPARE CONCRETE WITH 650 LT LIQUID ADHESIVE OR CALIFORNIA SEALANT AT A RATE OF 250 - 300 SF/GAL OR 650 WB LIQUID ADHESIVE AT A RATE OF 350 TO 400 SF/GAL

SUBSTRATE



**PRM11** SECTION @ WALL EXPANSION JOINT COVER

**SPECIAL NOTE: IF ADHESIVE IS REQUIRED FOR SEAMS OR ENDLAPS DO NOT USE 650 WB LIQUID ADHESIVE**

© POLYGUARD PRODUCTS, INC.  
MATERIALS SEPARATED FOR CLARITY

The information provided is based on data and knowledge considered to be true and accurate and is offered for the users' consideration, investigation and verification, but we do not warrant the results to be obtained. Please read all data sheets, statements, recommendations or suggestions in conjunction with our conditions of sale, which apply to all goods supplied by us.	NOT TO SCALE
	EFFECTIVE DATE: 07/01/2019
	SUPERCEDES: 11/26/2014