

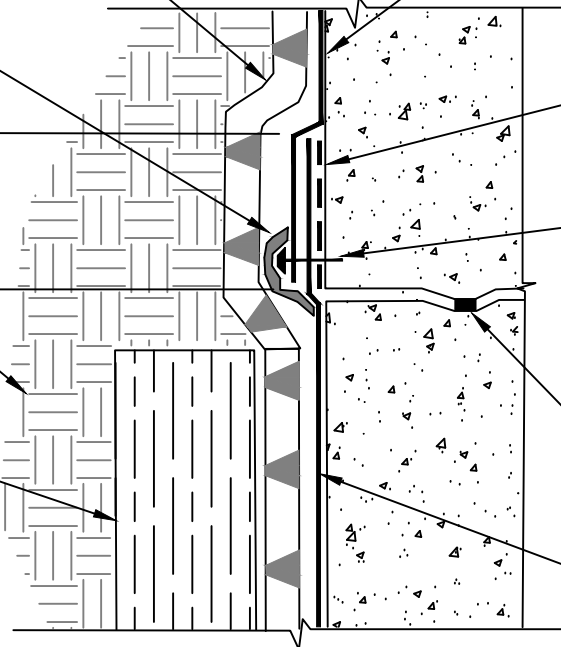
POLYFLOW 15 / 15P MOLDED SHEET DRAINAGE - FABRIC FACING RETENTION SYSTEM AND BACKFILL

MINIMUM 90 MILS OF DETAIL SEALANT PW OR LM-95 APPLIED OVER TERMINATION STRIP AND TIE IN SEAMS OF 650/PRM MEMBRANE AND BLINDSIDE MEMBRANE EXTENDED A MINIMUM OF 1/2" PAST TERMINAL EDGE

SOIL

APPROVED RETENTION SYSTEM - BY OTHERS

6" OVERLAP AND TIE IN



650 OR PRM PROTECTED WALL MEMBRANE APPLIED TO CLEAN, DRY, FROST FREE SUBSTRATE PREPARED WITH 650 LT LIQUID ADHESIVE OR CALIFORNIA SEALANT AT A RATE OF 250 - 300 SF/GAL AND ONTO EXISTING BLINDSIDE MEMBRANE MINIMUM OF 6"

606 TAPE APPLIED TO CLEAN, DRY, FROST FREE SUBSTRATE PREPARED WITH 650 LT LIQUID ADHESIVE OR CALIFORNIA SEALANT AT A RATE OF 250 - 300 SF/GAL

1/8" X 1" METAL TERMINATION STRIP ALIGNED ALONG BOTTOM EDGE OF 650/PRM MEMBRANE WITH FASTENERS SPACED 2" INWARD FROM END OF TERMINATION STRIP AND NOT MORE THAN 8" SPACING BETWEEN FASTENERS - IF TERMINATION IS NOT IN WATER TABLE NO TERM BAR IS REQUIRED.

WATERSTOP BY OTHERS

BLINDSIDE MEMBRANE FABRIC TOWARD CONCRETE POUR OR SHOTCRETE WHEN NOT IN WATER TABLE - CONSULT POLYGUARD IF IN THE WATER TABLE - FOLD BACK TOP FLAP AND PREPARE WITH 650 LT LIQUID ADHESIVE OR CALIFORNIA SEALANT AT A RATE OF 50 - 75 SF/GAL PRIOR TO APPLYING OVER 606 TAPE



SECTION@ VERTICAL TERMINATION OF 650/PRM TO BLINDSIDE MEMBRANE

© POLYGUARD PRODUCTS, INC.
MATERIALS SEPARATED FOR CLARITY

<p>The information provided is based on data and knowledge considered to be true and accurate and is offered for the users' consideration, investigation and verification, but we do not warrant the results to be obtained. Please read all data sheets, statements, recommendations or suggestions in conjunction with our conditions of sale, which apply to all goods supplied by us.</p>	NOT TO SCALE
	EFFECTIVE DATE: 01/17/2022
	SUPERCEDES: 03/05/2021