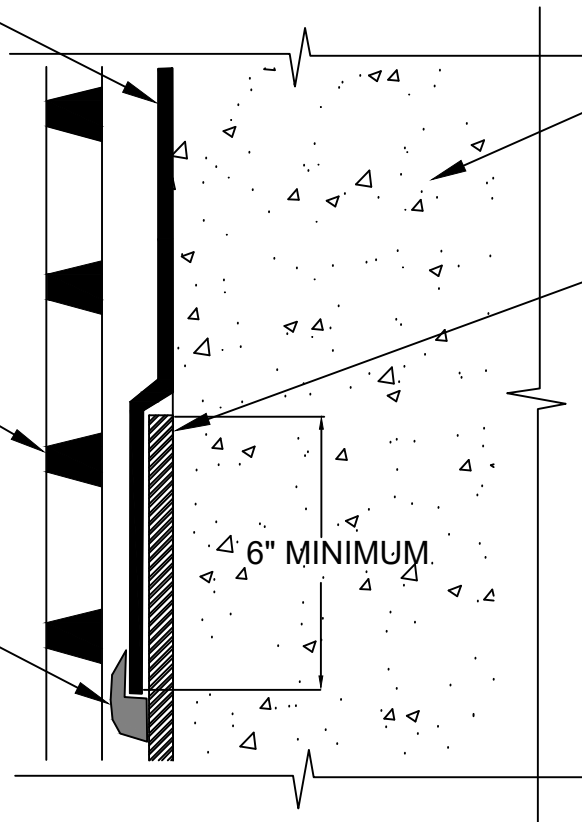


650 OR PRM MEMBRANE APPLIED TO CLEAN, DRY, FROST FREE SUBSTRATE PREPARED WITH 650 LT LIQUID ADHESIVE OR CALIFORNIA SEALANT AT A RATE OF 250 - 300 SF/GAL AND OVER EMBEDDED BLINDSIDE MEMBRANE A MINIMUM OF 6"

POLYFLOW 15 OR 15P SHEET MOLDED DRAIN FABRIC TOWARD SOIL

90 MILS MINIMUM DETAIL SEALANT PW APPLIED TO TERMINAL EDGE OF 650 OR PRM MEMBRANE AND ONTO EACH SIDE OF THE EDGE A MINIMUM OF 3/4"



APPROVED SUBSTRATE - BY OTHERS

EMBEDDED BLINDSIDE MEMBRANE

6" MINIMUM

BS3

SECTION @ EMBEDDED BLINDSIDE TIE IN TO 650 / PRM MEMBRANE

© POLYGUARD PRODUCTS, INC.
 MATERIALS SEPARATED FOR CLARITY

<p>The information provided is based on data and knowledge considered to be true and accurate and is offered for the users' consideration, investigation and verification, but we do not warrant the results to be obtained. Please read all data sheets, statements, recommendations or suggestions in conjunction with our conditions of sale, which apply to all goods supplied by us.</p>	NOT TO SCALE
	EFFECTIVE DATE: 03/05/2021
	SUPERCEDES: 03/24/2014