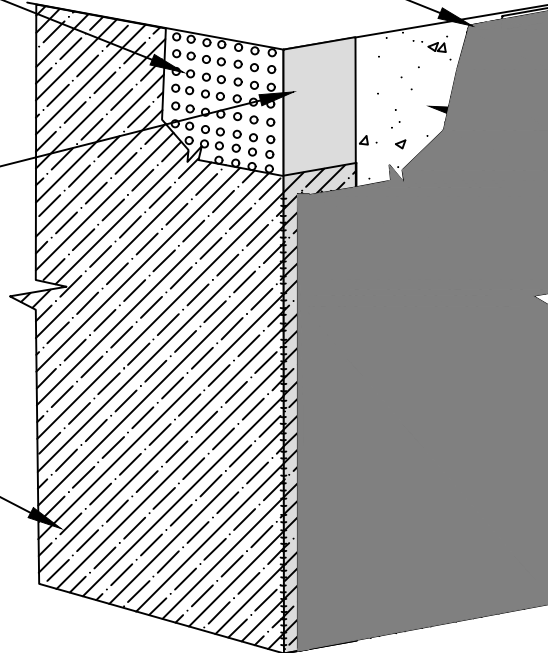


1/8" x 1" METAL TERMINATION STRIP ALIGNED ALONG TOP EDGE OF 650/PRM MEMBRANE AND FASTENED NOT GREATER THAN 8" SPACING.

POLYFLOW 15 MOLDED SHEET DRAIN - FABRIC TOWARD RETENTION SYSTEM

12" STRIP OF 606 TAPE APPLIED TO CLEAN, DRY AND FROST FREE CONCRETE PREPARED WITH 650 LT LIQUID ADHESIVE OR CALIFORNIA SEALANT APPLIED AT A RATE OF 250 - 300 SF/GAL

12" BLINDSIDE MEMBRANE TAIL APPLIED OVER 12" STRIP OF 606 TAPE - PREPARE FABRIC SIDE OF BLINDSIDE MEMBRANE WITH 650 LT LIQUID ADHESIVE OR CALIFORNIA SEALANT AT A RATE OF 50 - 75 SF/GAL



MINIMUM 90 MILS OF DETAIL SEALANT PW APPLIED TO THE TERMINAL EDGE OF TERMINATION STRIP COVERING FASTENERS AND EXTENDING 1/2" ABOVE AND BELOW TERMINATION STRIP

CLEAN DRY FROST FREE CONCRETE

MINIMUM 90 MILS OF DETAIL SEALANT PW APPLIED TO VERTICAL EDGE OF 650 / PRM MEMBRANE

650 / PRM PROTECTED WALL MEMBRANE APPLIED TO CLEAN, DRY AND FROST FREE SUBSTRATE PREPARED WITH 650 LT LIQUID ADHESIVE OR CALIFORNIA SEALANT AT A RATE OF 250 - 300 SF/GAL OR 650 WB LIQUID ADHESIVE AT A RATE OF 350 - 400 SF/GAL

BS14

SECTION@ BLINDSIDE TIE IN WITH 650/PRM AT OUTSIDE CORNER

© POLYGUARD PRODUCTS, INC.
MATERIALS SEPARATED FOR CLARITY