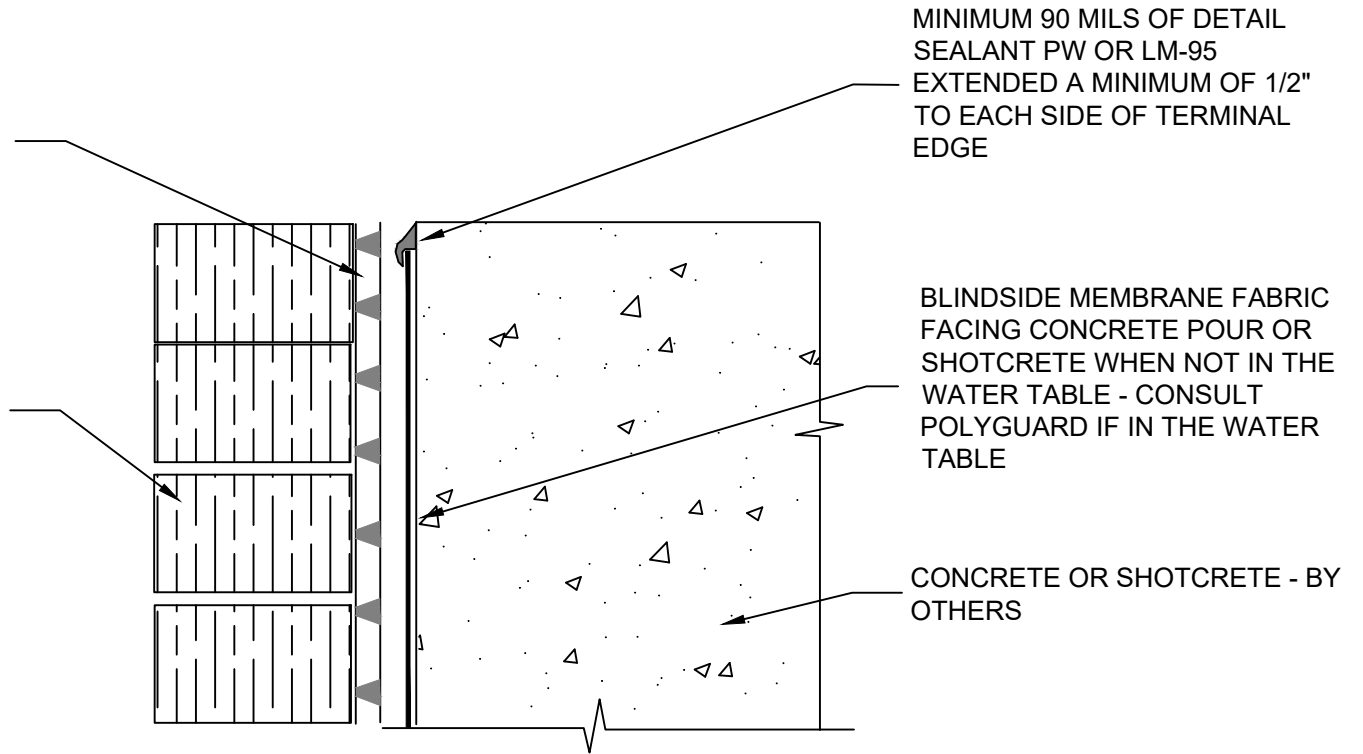


POLYFLOW 15 / 15P FABRIC FACING  
 RETENTION SYSTEM

APPROVED RETENTION SYSTEM - BY  
 OTHERS



MINIMUM 90 MILS OF DETAIL  
 SEALANT PW OR LM-95  
 EXTENDED A MINIMUM OF 1/2"  
 TO EACH SIDE OF TERMINAL  
 EDGE

BLINDSIDE MEMBRANE FABRIC  
 FACING CONCRETE POUR OR  
 SHOTCRETE WHEN NOT IN THE  
 WATER TABLE - CONSULT  
 POLYGUARD IF IN THE WATER  
 TABLE

CONCRETE OR SHOTCRETE - BY  
 OTHERS

**BS17**

**SECTION@ TOP OF WALL EMBEDDED TERMINATION**

© POLYGUARD PRODUCTS, INC.  
 MATERIALS SEPARATED FOR CLARITY

<p>The information provided is based on data and knowledge considered to be true and accurate and is offered for the users' consideration, investigation and verification, but we do not warrant the results to be obtained. Please read all data sheets, statements, recommendations or suggestions in conjunction with our conditions of sale, which apply to all goods supplied by us.</p>	NOT TO SCALE
	EFFECTIVE DATE: 01/18/2022
	SUPERCEDES: 03/05/2021