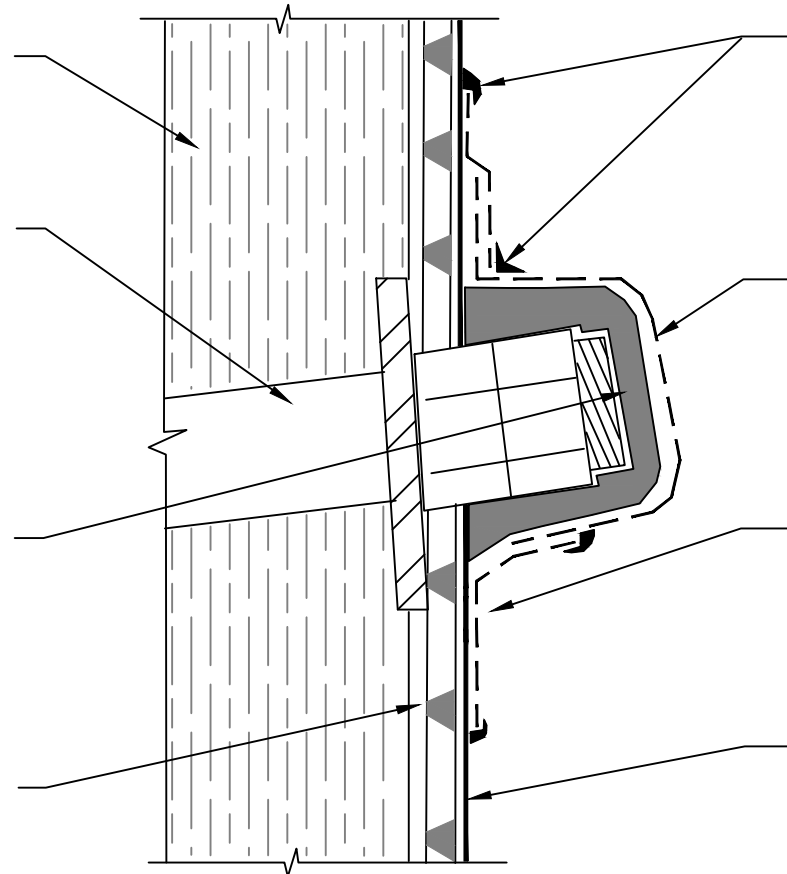


APPROVED RETENTION SYSTEM
LAGGING SHOWN - BY OTHERS

SOIL NAIL - BY OTHERS

90 MILS MINIMUM OF LM-95
APPLIED OVER BLINDSIDE
MEMBRANE AND SOIL NAIL HEAD -
PREPARE FABRIC WITH 650 LT
LIQUID ADHESIVE OR CALIFORNIA
SEALANT AT A RATE OF 50 - 75
SF/GAL

POLYFLOW 15 /15P MOLDED
SHEET DRAIN FABRIC TOWARD
RETENTION SYSTEM



DETAIL SEALANT PW OR LM-95 APPLIED
OVER TERMINATION OF FABRIC TAPE
AND ONTO BLINDSIDE MEMBRANE -
PREPARE FABRIC WITH 650 LT LIQUID
ADHESIVE OR CALIFORNIA SEALANT AT A
RATE OF 50 - 75 SF/GAL

FABRIC TAPE APPLIED OVER BLINDSIDE
MEMBRANE AND LM-95 - PREPARE
FABRIC WITH 650 LT LIQUID ADHESIVE OR
CALIFORNIA SEALANT AT A RATE OF 50 -
75 SF/GAL

FABRIC TAPE APPLIED ONTO FABRIC
TAPE AND ONTO BLINDSIDE MEMBRANE
PREPARED WITH 650 LT LIQUID ADHESIVE
OR CALIFORNIA SEALANT AT A RATE OF
50 - 75 SF/GAL

BLINDSIDE MEMBRANE FABRIC TOWARD
CONCRETE POUR OR SHOTCRETE NOT IN
THE WATER TABLE - CONSULT
POLYGUARD IF IN THE WATER TABLE

BS11

SECTION@ BLINDSIDE TIE BACK / SOIL NAIL HEAD

© POLYGUARD PRODUCTS, INC.
MATERIALS SEPARATED FOR CLARITY