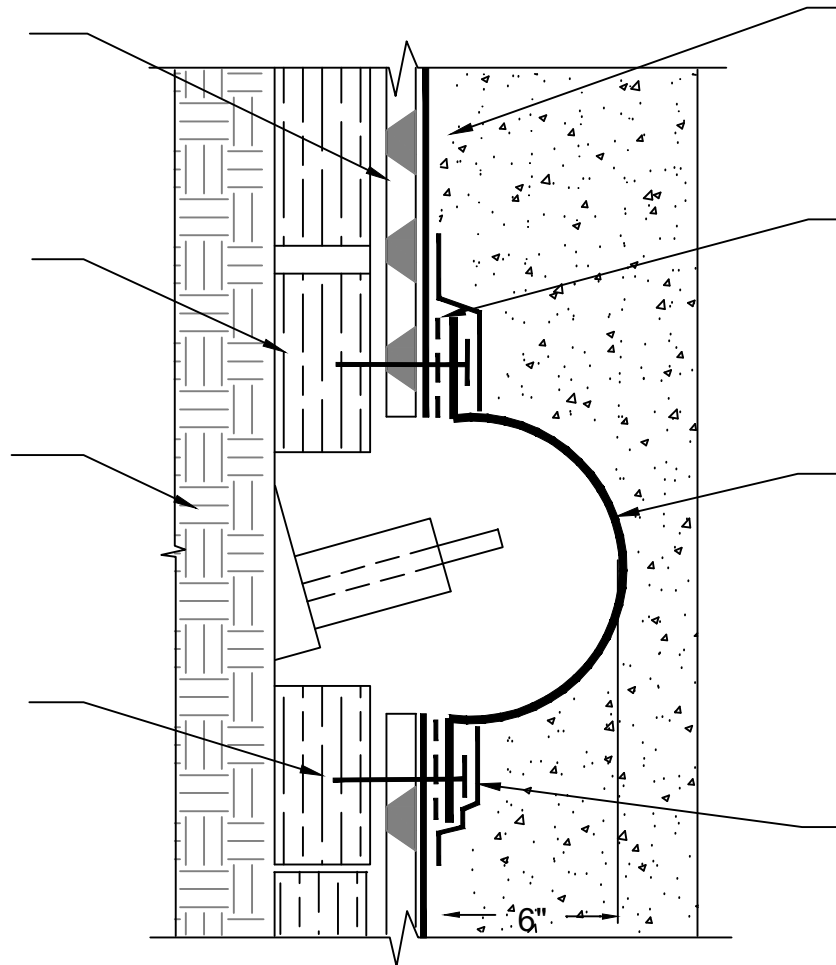


POLYFLOW 15 / 15 P SHEET MOLDED DRAIN FABRIC FACING RETENTION SYSTEM

RETENTION SYSTEM - WOOD LAGGING SHOWN

SOIL

FASTEN POLYCOVER TO RETENTION SYSTEM AT EACH FLANGE CORNER PRE DRILL FASTENER HOLES IN COLD WEATHER



BLINDSIDE MEMBRANE FABRIC FACING CONCRETE POUR OR SHOTCRETE WHEN NOT IN WATER TABLE - CONSULT POLYGUARD IF IN THE WATER TABLE

606 TAPE APPLIED TO BASE OF CLEAN DRY POLYCOVER AND FASTENER HEAD - APPLY 650 LT LIQUID ADHESIVE OR CALIFORNIA SEALANT AT A RATE OF 50 - 75 SF/GAL PRIOR TO APPLICATION OVER FABRIC SIDE OF BLINDSIDE MEMBRANE

TIEBACK COVER FIELD MADE OR PREFORMED

LM-95 APPLIED 3" ONTO UNPRIMED POLYCOVER AND 3" ON THE FABRIC OF THE BLINDSIDE MEMBRANE PREPARED WITH 650 LT LIQUID ADHESIVE OR CALIFORNIA SEALANT AT A RATE OF 50 - 75 SF/GAL

BS15

SECTION@POLYCOVER OVER THE TIE BACK / SOIL NAIL ASSEMBLY

© POLYGUARD PRODUCTS, INC.
MATERIALS SEPARATED FOR CLARITY

<p>The information provided is based on data and knowledge considered to be true and accurate and is offered for the users' consideration, investigation and verification, but we do not warrant the results to be obtained. Please read all data sheets, statements, recommendations or suggestions in conjunction with our conditions of sale, which apply to all goods supplied by us.</p>	NOT TO SCALE
	EFFECTIVE DATE: 01/18/2022
	SUPERCEDES: 03/05/2021