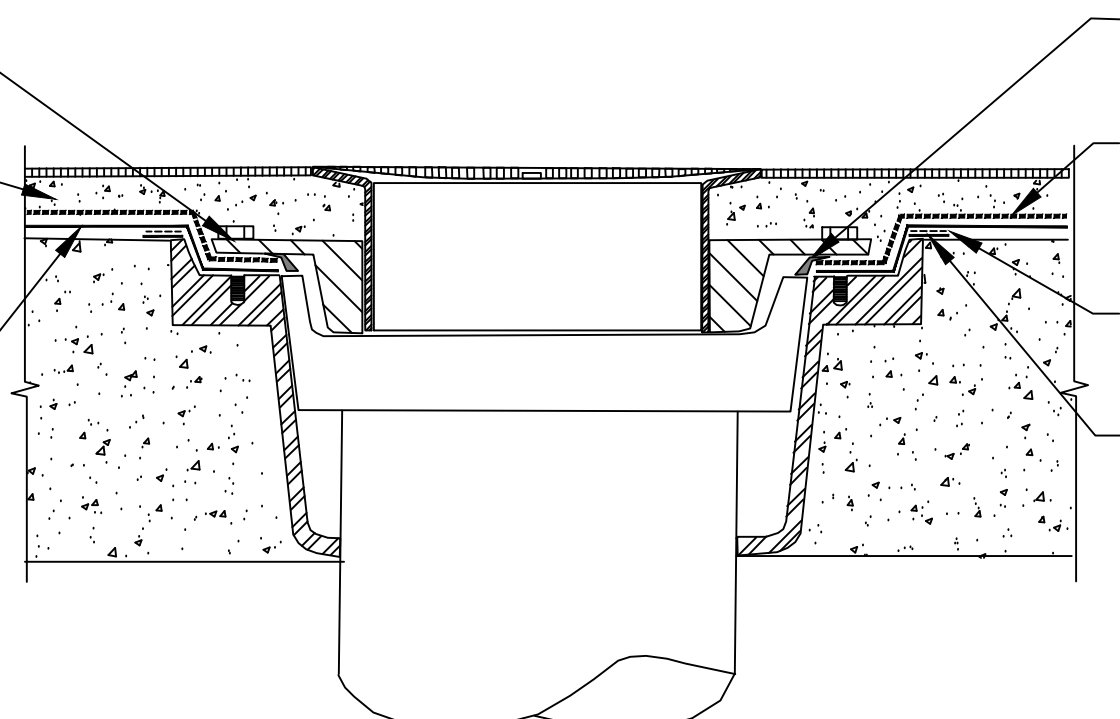


CLAMPING RING -  
 PART OF DRAIN  
 SYSTEM - BY  
 OTHERS

GROUT OR THIN  
 SET - BY OTHERS

40 MILS OVERSEAL H  
 APPLIED TO CLEAN  
 DRY SUBSTRATE



LM-95 OR DETAIL  
 SEALANT PW APPLIED  
 TO TERMINATION OF  
 TILEGUARD MEMBRANE

TILEGUARD APPLIED  
 OVER OVERSEAL H  
 BUTTING LAPS

OVERSEAL MESH  
 EMBEDDED INTO WET  
 OVERSEAL H

20 MILS OVERSEAL H  
 APPLIED TO CLEAN  
 DRY SUBSTRATE

**TG3**

**SECTION@ TILEGUARD WATERPROOFED FLOOR DRAIN**

© POLYGUARD PRODUCTS, INC.  
 MATERIALS SEPARATED FOR CLARITY

The information provided is based on data and knowledge considered to be true and accurate and is offered for the users' consideration, investigation and verification, but we do not warrant the results to be obtained. Please read all data sheets, statements, recommendations or suggestions in conjunction with our conditions of sale, which apply to all goods supplied by us.	NOT TO SCALE
	EFFECTIVE DATE: 03/23/2020
	SUPERCEDES: 07/01/2019