

COMMERCIAL STRETCH

Fluid-Applied Membrane Waterproofing

PRODUCT NAME

Commercial Stretch

VOC: 525 g/L

MANUFACTURER

Polyguard Products, Inc.

Ennis, TX 75119

(214) 515-5000

www.polyguard.com

PRODUCT DESCRIPTION

BASIC USES

Commercial Stretch is designed for waterproofing concrete, precast concrete, CMU foundation walls, and other structural surfaces on the hydro positive-side. When redundant protection is desired, a hydro positive-side application of Commercial Stretch coupled with a hydro negative-side application of PRO 1000 is suggested.

PRODUCT FEATURES

- Factory-controlled, single component product ensures consistency.
- Mold will not find a food source in the Commercial Stretch membrane, which thereby contributes to the overall mold management within a wall system.
- When a repair or stop point is established, wet product can later be applied to clean and cured product creating a continuous system without seams.
- Minimal set-up and close-down procedures for spray applications adds productive time for spraying, quick adjustments in job sequencing, and where jobsite movement is required.
- Application in ambient temperatures between -20°F (-29°C) and 120°F (49°C) reduces project rescheduling due to weather related conditions.
- After application, it is not affected by immediate or subsequent exposure to rain.

COMPOSITION & MATERIALS

Commercial Stretch is a patented, single component, cold liquid-applied, elastomeric, thermoplastic rubber coating and mastic that cures to form a durable waterproofing membrane capable of bridging substrate shrinkage cracks up to 1/16-inch.

Available with VOC content choice of 100, 200, and 525 g/L.

TECHNICAL DATA

See properties table below.

INSTALLATION

SURFACE PREPARATION

Note: When using Detail Sealant PW™ as filler to be covered by Commercial Stretch, allow a minimum 1 hour to skin over before covering, adding additional time for lower ambient and surface temperatures. Cure time is less than an hour at 75°F (24°C) and 50% RH.

Product Data Sheet

Per regulations of all states, excluding California

Prepare substrates to be dry; clean of dirt and debris; and free of mortar smears, form release agents, and frost/ice. For maximum results, provide cured substrates with a minimum 175 PSI pull-off strength.

Poured Concrete Wall Preparation:

Before coating, allow 24 hours for drying and start said time measurement after bleed water has drained from the wall (longer dry time will be needed for lower than 50°F/10°C ambient temperatures). Remove form ties from the inside and outside faces of the wall and fill each tie depression flush with Detail Sealant PW or non-shrinking Portland cement grout, installed per manufacturer's instructions. Allow Detail Sealant PW™ a minimum of 1 hour to skin over before covering, adding additional time for lower ambient and surface temperatures. Fill honeycombed concrete with non-shrinking Portland cement grout, installed per manufacturer's instructions, and allow said application to cure before coating.

Concrete Masonry Wall Preparation:

Leave CMU walls un-parged. Strike mortar joints full and flush to the face of the CMU. Grout or fill mortar voids with Detail Sealant PW, mortar, or non-shrinking Portland cement grout installed per manufacturer's instructions. Allow mortars and grouts 12 - 48 hours to dry before coating. Mortar or grout-filled cores, bond beams, and rain-soaked uncovered walls hold substantially more water and will require added time to dry before coating. When in doubt about the acceptable dryness of a wall, apply a 60 mil coating onto a 2' x 2' wall area and allow the coating to dry. Proceed with coating the wall if the dry sample coating sticks to the wall surface. Allow more drying time if the dry sample coating doesn't stick to the wall. Repeat as necessary.

Submit precast and control joint designs to Polyguard for approval and prior to commencing work.

PRIMING

No primer is needed. For best results, apply Commercial Stretch directly to sound concrete or CMU.

MEMBRANE APPLICATION

Apply Commercial Stretch and related accessory products over poured concrete and CMU substrate walls that have cured for a minimum three days. Provide the substrate surfaces as dry; clean of dirt and debris; and free of mortar smears, form release agents, and frost/ice.

Apply Commercial Stretch and related accessory products in ambient temperatures between -20°F (-29°C) and 120°F (49°C); as one coat or more; by sprayer, roller, or brush to achieve a continuous film at the desired coverage rate of 27 square feet per gallon (60 wet mils). For application with an airless sprayer, use 3700-to-4000 PSI stall pressure and a 0.037-inch reversible spray tip.

Commercial Stretch dries to an average thickness of 30 mils, but coverage rates will vary inversely related to the

substrate texture and porosity. Apply Detail Sealant PW either before or after the application of Commercial Stretch, allowing the Detail Sealant PW a minimum of 1 hour to skin over before covering with Commercial Stretch, adding additional time for lower ambient and surface temperatures; or allowing the Commercial Stretch a minimum of 24 hours to dry/cure before covering with Detail Sealant PW. At all times, allow a minimum 24 hours for Commercial Stretch to dry/cure before continuing work on the surface.

Drying in direct sunlight and temperatures above 65°F (18°C) can cause blistering of the coating. Where said exposure can't be avoided, apply in multiple coats of 20 to 30 wet mils allowing each application to dry a minimum 24 hours before applying the next coating.

INSPECTION

The coating is considered dry when the face of the coating will not deform under heavily-applied thumb pressure. Coverage is considered complete when the dry coating has been inspected and found to be uniform and continuous.

BACKFILL

Backfill after the system is complete in a non-destructive manner. Shape the final grade to drain surface water away from the structure.

PROTECTION AND DRAINAGE

The system is considered complete when Polyflow® 15 or Polyflow® 15P have been adhered to the face of the coating with a low-rise spray adhesive; and associated drainage fittings are connected to daylight or to an active sump system.

Commercial Stretch will be adversely affected by prolonged or constant ultraviolet radiation (UV) exposure longer than 30 days. For periods of (UV) exposure greater than 30 days, cover with PRO 1000 prior to the end of the 30-day term or remove and recoat uncovered/exposed Commercial Stretch after the 30-day term.

MEMBRANE REPAIR

Repair damaged membrane and/or thin coverage with additional material. Thoroughly clean and dry damaged areas or thin coverage before re-coating with Commercial Stretch. Allow re-coated areas a minimum of 24 hours to cure before installing protection/drainage materials.

LIMITATIONS:

This product is not intended to be shipped or used in the States of California, Connecticut, Delaware, Maryland, or Rhode Island. The use of these products must be according to Federal, State and local governing regulations. To be used in exterior applications only. Cannot be applied to any polystyrene or foam-based products. Once the solvent has flashed out of the coating then polystyrene or foam-based products can be installed onto the cured membrane. Not to be used as a liner in potable water conditions.

WARNING:

Flammable Liquid and vapor. DO NOT SMOKE while mixing or applying product. Ensure there are no open flames and/or

spark generating sources on project while mixing or applying the product.

PRECAUTIONS:

Install in a well-ventilated open area. Take safety precautions and wear appropriate safety gear for the application of solvent-based coatings (i.e. gloves, eye protection, respirator, ventilation, etc.) according to Federal, State and local governing regulations. Harmful if inhaled. Can cause eye and skin irritation. Use process enclosures, local exhaust ventilation or other engineering controls to keep worker exposure to airborne contaminants below any recommended or statutory limits. The engineering controls also need to keep gas, vapor, or dust concentrations below any lower explosive limits. Use explosion-proof ventilation equipment and non-sparking tools. All trucks, barrels and spray equipment shall be properly grounded and bonded. A working fire extinguisher, type ABC, shall be available onsite in both the mixing and work areas. Prior to use and mixing, review the Safety Data Sheet for proper protective equipment and additional health, environmental and safety precautions.

STORAGE:

This product is a solvent based product and special care must be taken during storage, handling and use. Protect containers from water, sparks, flames, excessive heat, and poor ventilation. Store/keep product out of direct sunlight and in ambient temperatures between 10° F (23° C) and 100° F (38° C). For best application results, store in ambient temperatures above 50° F (11° C). Store in original container, lid securely closed, and with all markings & labeling in tact. Follow all Federal, State and local governing regulations.

SAFETY

SDS documents for all Polyguard products can be obtained at our website www.polyguard.com. Call Polyguard Products, Inc. at (214)515-5000 with questions.

WARRANTY

We, the manufacturer, warrant only that this product is free of defects, since many factors which affect the results obtained from this product are beyond our control; such as weather, workmanship, equipment utilized and prior condition of the substrate. We will replace at no charge product proved to be defective within twelve (12) months of purchase, provided it has been applied in accordance with our written directions for uses we recommended as suitable for this product. Proof of purchase must be provided. A five (5) year material or system warranty may be available upon request. Contact Polyguard Products, Inc. for further details.

TECHNICAL SERVICES

Technical assistance, information and Polyguard's products are available through a nationwide network of distributors and architectural representatives, or contact Polyguard Products, Inc.

P.O. Box 755, Ennis, TX 75120-0755

Sales: (615) 217-6061 • Tech Support: (214) 515-5000

Email: archtech@polyguard.com

Website: www.polyguard.com

PROPERTY	TEST METHOD	TYPICAL VALUE
COLOR		Gray
SERVICE TEMPERATURE RANGE		-25°F to 185°F
PERMEANCE TO WATER VAPOR TRANSMISSION	ASTM E 96	0.058 Perms
MEMBRANE HYDROSTATIC PRESSURE RESISTANCE	ASTM D 5385	231 ft.
PEEL ADHESION	ASTM D 903	7.05
TENSILE STRENGTH	ASTM D 412 Modified Die C	378 PSI
ELONGATION	ASTM D 412 Modified Die C	515%
HARDNESS, SHORE A	ASTM D 2240	60
ADHESION	ASTM D 4541	135+ PSI Average
HYDROSTATIC PRESSURE OVER CRACKS, POURED CEMENT AND POURED MASONRY	ASTM C 1306	11 PSI
LOW-TEMPERATURE FLEXIBILITY AND CRACK BRIDGING	ASTM C 836 Section 6.7	Pass
REMAINS IN PLACE DURING APPLICATION, POURED CEMENT AND MASONRY	ASTM C 836 Section 6.9	Pass
ADHESION STRENGTH TO POURED CONCRETE	ASTM C 836 Section 6.10	7.551 lbf/in.
EXTENSIBILITY AFTER HEAT AGING	ASTM C 836 Section 6.12	No Cracking or tearing of membrane
RESISTANCE TO WATER	ASTM D 2939 Section 15	No Blistering or Re-emulsification
COLD, LIQUID-APPLIED, BELOW-GRADE, EXTERIOR DAMPPROOFING AND WATERPROOFING MATERIALS CATEGORY 1 40 C.F.R.§59.401	ICC-ES AC 29	Pass
"WATERPROOFING SEALERS AND TREATMENTS"		525 G/L VOC Also available in other VOC options

PACKAGING	PART NUMBER	UNIT SIZE
COMMERCIAL STRETCH	STRETCH GRAY 05	5-gallon pail
	STRETCH GRAY 55	55-gallon drum
<i>Commercial Stretch Accessories:</i>		
DETAIL SEALANT PW™	DETAIL SEALANT PW – SAU 20 OZ	20 sausages/ctn
DETAIL SEALANT PW™	DETAIL SEALANT PW – 3 GAL	3-gallon pail
POLYFLOW® 15	POLYFLOW15	4' x 50' roll
POLYFLOW® 15P	POLYFLOW15P	4' x 50' roll
TOTALFLOW™	TOTAL FLOW	24" x 50' roll
TOTALFLOW™ END OUTLET (4")	OUTLET4-UNIV	N/A
TOTALFLOW™ TEE OUTLET (4")	TEE4-UNIV	N/A

The information contained in this document is based on data and knowledge considered to be true and accurate at time of printing and is offered for the users' consideration, investigation and verification. Polyguard Products, Inc. cannot be held liable for errors made as a result of information herein. Changes and modifications can be made to this document without prior notice. No statement, recommendation or suggestion is intended for use which would infringe on patents or copyrights held by Polyguard Products, Inc.

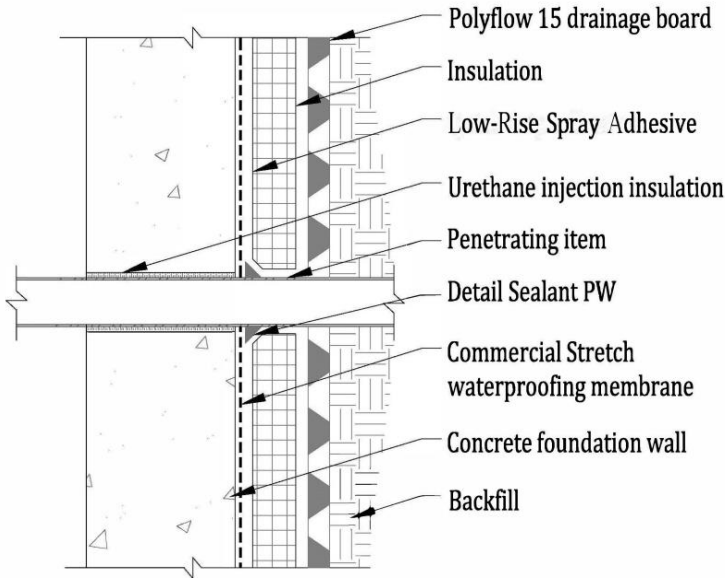
P.O. Box 755, Ennis, TX 75120 • PH: (214) 515-5000

www.Polyguard.com

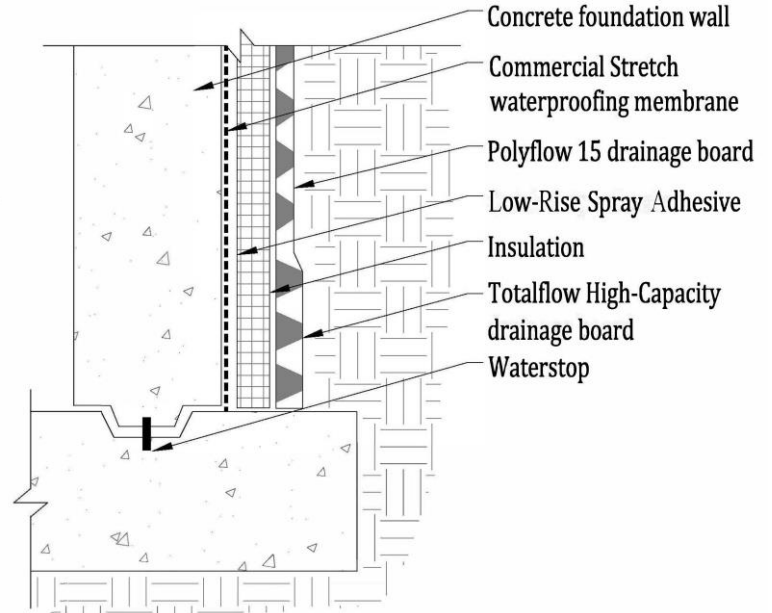
Commercial Stretch 525 VOC (US) R01.07.22

Common Polyguard[®] Commercial Stretch Membrane Applications

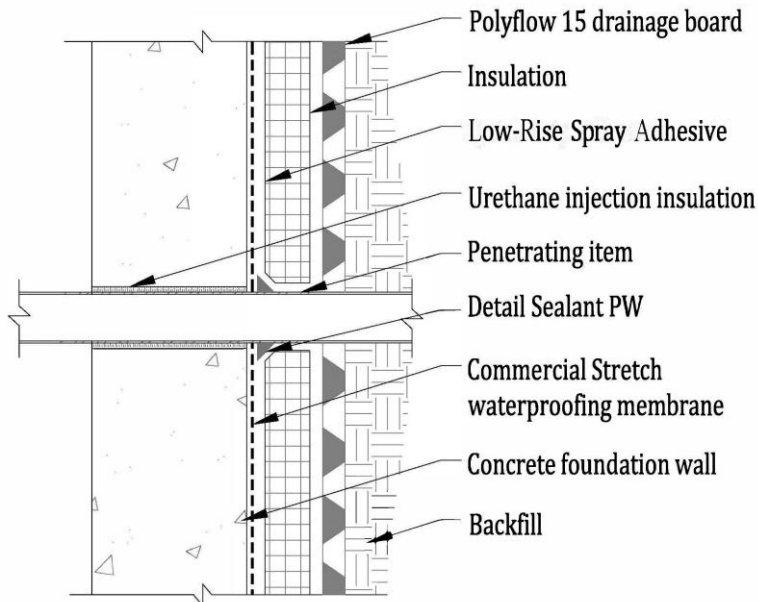
These diagrams are not intended to be application instructions, simply illustrations



Foundation Wall Penetration



Foundation Wall and Footer



Foundation Wall Penetration

Please Note: Not intended to be full details. For full application detail on these configurations, see Polyguard details CS2, CS5, CS6, or contact Polyguard Products.