

AIRLOK® STPE WRB SPRAY-N-ROLL

Fluid-Applied Air & Water Resistive Barrier

PRODUCT NAME

Airlok® STPE WRB Spray-N-Roll

MANUFACTURER

Polyguard Products, Inc.

Ennis, TX 75119

(214) 515-5000

www.polyguard.com

PRODUCT DESCRIPTION

BASIC USES

Typical applications include coating masonry, masonry cavity, poured and precast walls. Additional applications include plywood, oriented strand board (OSB), and exterior-grade gypsum sheathing which shall be covered with an exterior facade.

Strengths – A sprayable, high-solids, elastomeric, Sil-Terminated Polyether coating with <20 (g/l) VOC; permeable up to 15 perms with standard application at 23 mils wet for curing down to 20 mils dry. Can be applied at temperatures of 25°F (-4°C) and rising. ABAA evaluated and NFPA 285 compliant.

Limitations – 6-month UV exposure.

Uses – Typical applications include exterior-grade gypsum sheathing, poured concrete, concrete masonry walls (CMU), plywood, and oriented strand board (OSB) in cold weather climates.

COMPOSITION & MATERIALS

Airlok® Spray-N-Roll is a single-component, cold-applied, vapor permeable, Silyl Terminated Polyether (STPE) fluid; that combines the best of silicone and polyurethane properties.

TECHNICAL DATA

See physical properties table.

INSTALLATION

SURFACE PREPARATION

Apply to clean, structurally sound and dust free substrates. Airlok® Spray-N-Roll can be applied to damp substrates which are clear of detectable surface water, frost, ice or snow. Refer to the Airlok® STPE WRB Installation Guide and the standard details for additional instructions.

PRIMING

No primer is needed, except for cut edges of gypsum sheathing; refer to the Airlok® STPE WRB Installation Guide. For best results, apply Airlok® Spray-N-Roll directly to clean, structurally sound and dust free masonry, poured concrete, precast walls, plywood, OSB, and exterior-grade gypsum sheathing surfaces.

Product Data Sheet

Per regulations of all states

APPLICATION

Membrane: The Airlok® Spray-N-Roll can be applied before or after detailing/flashing with either Airlok® Flash-N-Roll, Airlok® Gun-N-Spread, Airlok® Detail-N-Joint and/or Detail Sealant PW™. Do not dilute or mix the Airlok® Spray-N-Roll.

Generally, apply Spray-N-Roll in one coat; by means of a sprayer, roller, or brush; to achieve a continuous film at the desired 20 mils dry, apply at a theoretical coverage rate of 69 square feet per gallon (23 wet mils). Additional material may be necessary on rougher or more porous substrates.

For application with an airless sprayer, use 3300-to-4000 PSI stall pressure and a 0.021-inch or 0.029-inch reversible spray tip.

Allow approximately 6 hours for the Spray-N-Roll to cure before continuing work on the surface. Allow additional time for low humidity climates. For arid climates, curing process can be accelerated with the application of a fine mist of fresh water.

Detailing/Flashing: Refer to Airlok® component product data sheets, Airlok® STPE WRB Installation Guide and the standard details for detailing/flashing instructions. Detailing can be performed before or after application of Spray-N-Roll.

MEMBRANE REPAIR

In the case of damaged Airlok® Spray-N-Roll, the area can be repaired by cleaning the surface with denatured alcohol and applying new material. No primer or bonding agent required.

LIMITATIONS, PROTECTION & CLEAN UP

- 1) For periods of ultra violet (UV) exposure greater than 6 months, contact Polyguard to inspect the Airlok® Spray-N-Roll condition.
- 2) Protect all surfaces from spilling, dripping or overspray that are not intended for coverage. If this occurs, immediately clean up with mineral spirits or similar solvent.
- 3) Clean all tools and equipment immediately after use with mineral spirits or similar solvent.

STORAGE

Store Airlok® STPE WRB system components as follows;

- 1) Protect from water, sparks, flames, excessive heat, and poor ventilation.
- 2) Keep out of direct sunlight.
- 3) Store in ambient temperature range between -10°F (23°C) and 100°F (38°C).
- 4) For best application results, store in ambient temperatures above 50°F (11°C).
- 5) Store in compliance with local governing regulations.

SAFETY

SDS documents for all Polyguard products can be obtained at our website www.polyguard.com. Call Polyguard Products, Inc. at (214) 515-5000 with questions.

WARRANTY

We, the manufacturer, warrant only that this product is free of defects, since many factors which affect the results obtained from this product are beyond our control; such as weather, workmanship, equipment utilized and prior condition of the substrate. We will replace at no charge product proved to be defective within twelve (12) months of purchase, provided it has been applied in accordance with our written directions for uses we recommended as suitable for this product. Proof of purchase must be provided. A five (5) year material or system warranty may be available upon request. Contact Polyguard Products, Inc. for further details.

TECHNICAL SERVICES

Technical assistance, information and Polyguard's products are available through a nationwide network of distributors and architectural representatives, or contact Polyguard Products, Inc. P.O. Box 755, Ennis, TX 75120-0755
 Sales: (615) 217-6061 • Tech Support: (214) 515-5000
 Email: archtech@polyguard.com
 Website: www.polyguard.com

PROPERTY	TEST METHOD	TYPICAL VALUE
COLOR		Gray
SERVICE TEMPERATURE RANGE		-25°F to 185°F
AIR PERMEANCE	ASTM E 2178	0.002 cfm/ft ²
AIR LEAKAGE & DURABILITY	ASTM E 2357	0.0016 cfm/ft ²
AIR LEAKAGE	ASTM E 283	0.0011 cfm/ft ²
STRUCTURAL PERFORMANCE	ASTM E 330	Pass
WATER VAPOR PERMEANCE	ASTM E 96 Method A	7.32 Perms
WATER VAPOR PERMEANCE	ASTM E 96 Method B	15 Perms
WATER PENETRATION	ASTM E 331	Pass
WATER INFILTRATION	AAMA 501.2	Pass
WATER RESISTANCE	AATC 127-2008	Pass
ADHESION TO DENSGLASS	ASTM D 4541	> 41PSI
ADHESION TO CONCRETE	ASTM D 4541	> 120 PSI
CRACK BRIDGING	ASTM C 1305	Pass
NAIL SEALABILITY	ASTM D 1970	Pass
TENSILE STRENGTH	ASTM D 412	100 PSI
HARDNESS, SHORE A	ASTM D 2240	45
ELONGATION	ASTM D 412	300%
TEAR STRENGTH	ASTM D 1004	60 PSI
EVALUATION OF FIRE PROPOGATION CHARACTERISTICS	NFPA 285	Compliant*
VOC		< 20 g/l

*Related to specific assemblies

PACKAGING	PART NUMBER	UNIT SIZE
AIRLOK® STPE WRB SPRAY-N-ROLL	AIRLOK STPE 2300-5 GAL	5-gallon pail
	AIRLOK STPE 2300-50 GAL	50-gallon drum
Airlok® STPE WRB System Accessories:		
AIRLOK® STPE WRB FLASH-N-ROLL	AIRLOK STPE 2400-2 GAL	2-gallon pail
AIRLOK® STPE WRB FLASH-N-ROLL	AIRLOK STPE 2400-5 GAL	5-gallon pail
AIRLOK® STPE WRB GUN-N-SPREAD	AIRLOK STPE 2100-SAU 20 OZ	20 sausages/ctn
AIRLOK® STPE WRB DETAIL-N-JOINT	AIRLOK STPE 2200-SAU 20 OZ	5-gallon pail
DETAIL SEALANT PW™	DETAIL SEALANT PW – SAU 20 OZ	20 sausages/ctn
DETAIL SEALANT PW™	DETAIL SEALANT PW – 3 GAL	3-gallon pail
AIRLOK® 400 NP	- 40 mil (6", 9", 12", 18", 24") Commonly used as TWF	VARIES/SIZE
AIRLOK® UV 400 NP	- 40 mil (6", 9", 12") Used as <i>Window Flashing Only; no TWF</i>	VARIES/SIZE
AIRLOK® UV ULTRA 400 NP	- 40 mil (6", 9", 12") Used as <i>Window Flashing Only; no TWF</i>	VARIES/SIZE
AIRLOK® 200 BU/NP	- 28 mil (6", 9", 12", 18", 24") Commonly used as TWF	VARIES/SIZE
AIRLOK® UV 200 BU/NP	- 28 mil (6", 9", 12") Used as <i>Window Flashing Only; no TWF</i>	VARIES/SIZE
650 LT LIQUID ADHESIVE	650-5 LIQ ADH 5 GA	5-gallon pail
650 LT LIQUID ADHESIVE	650-5 LIQ ADH 1 GA	4 – 1 gal pails/ctn
CALIFORNIA SEALANT	CALSEAL5	5-gallon pail

The information contained in this document is based on data and knowledge considered to be true and accurate at time of printing and is offered for the users' consideration, investigation and verification. Polyguard Products, Inc. cannot be held liable for errors made as a result of information herein. Changes and modifications can be made to this document without prior notice. No statement, recommendation or suggestion is intended for use which would infringe on patents or copyrights held by Polyguard Products, Inc.

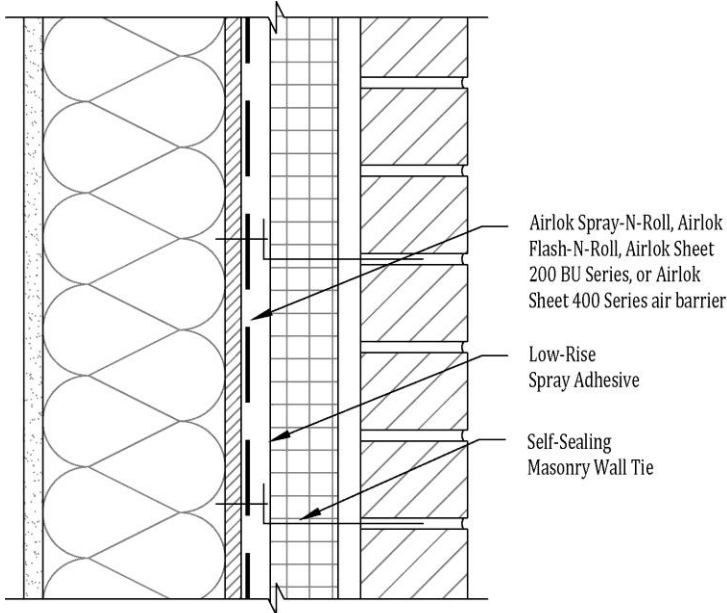
P.O. Box 755, Ennis, TX 75120 • PH: (214) 515-5000

www.Polyguard.com

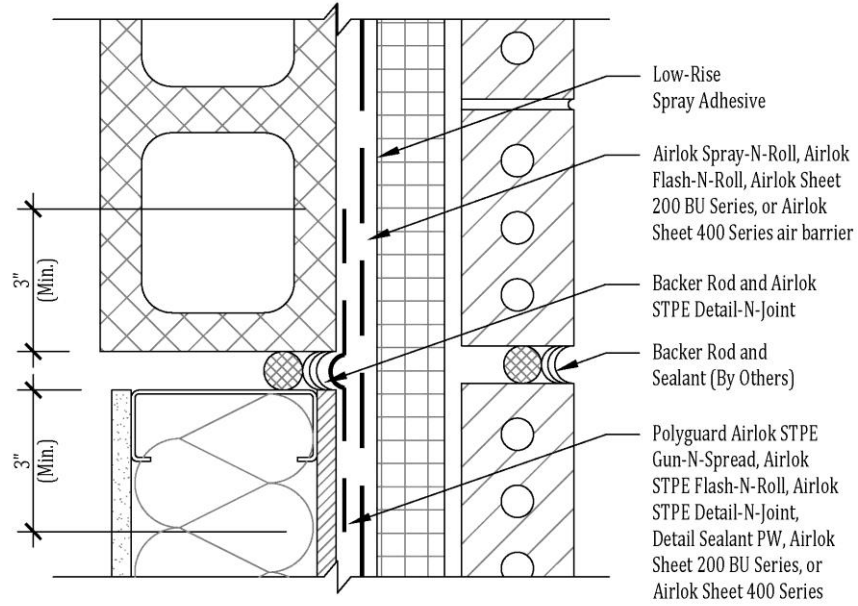
Airlok Spray-N-Roll R01.08.22

Common Polyguard® Airlok® STPE Spray-N-Roll Air Barrier Applications

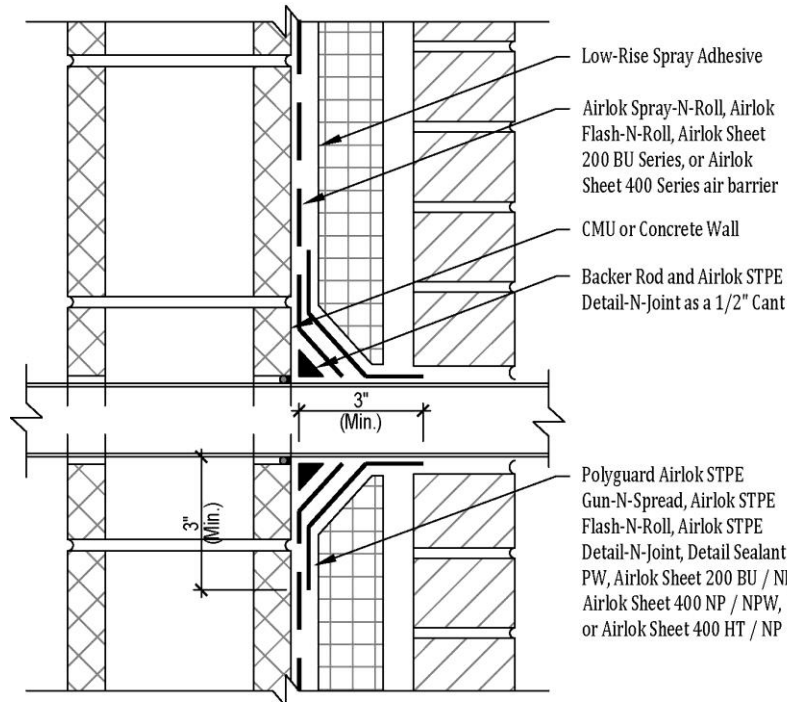
These diagrams are not intended to be application instructions, simply illustrations



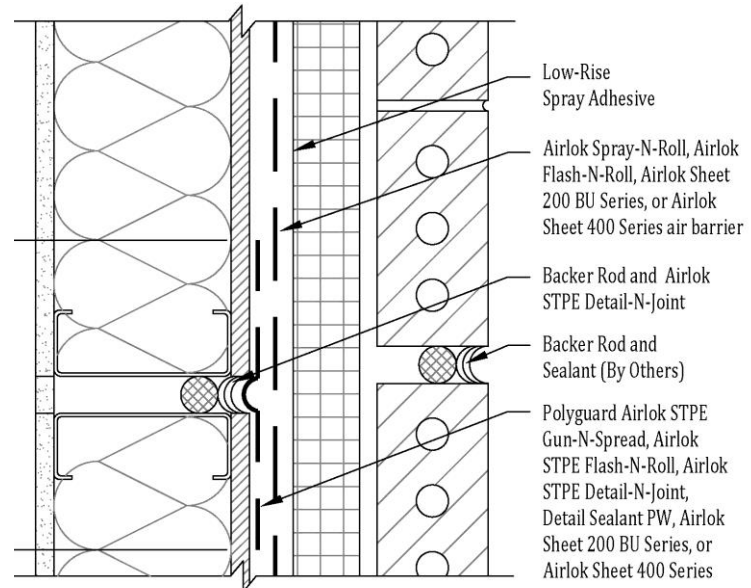
Airlok STPE Spray-N-Roll Air Barrier - Typical Wall



Airlok STPE Spray-N-Roll Air Barrier - Wall Transition



Airlok STPE Spray-N-Roll Air Barrier - Wall Penetration



Airlok STPE Spray-N-Roll air barrier - Expansion Joint

Please Note: Not intended to be full details. For full application detail on these configurations, see Polyguard Airlok STPE Spray-N-Roll details, or contact Polyguard Products.