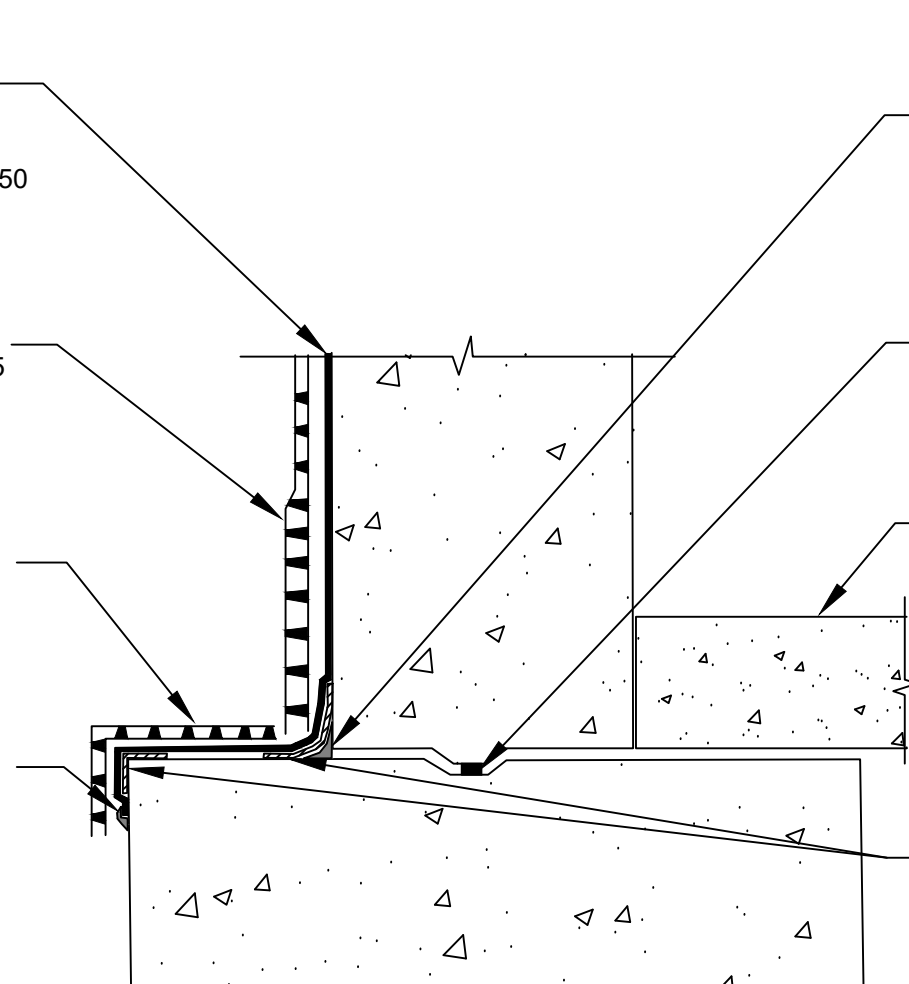


650 MEMBRANE APPLIED TO SUBSTRATE PREPARED WITH 650 LT LIQUID ADHESIVE OR, CALIFORNIA SEALANT AT A RATE OF 250 - 300 SF/GAL OR 650 WB LIQUID ADHESIVE AT A RATE OF 350 - 400 SF/GAL

TOTALFLOW HIGH CAPACITY PERIMETER DRAIN - FABRIC FACING BACKFILL AND CONNECTS TO THE POLYFLOW 15 OR 15P SHEET MOLDED DRAIN CONTINUED UP THE WALL

POLYFLOW 15 OR 15P SHEET MOLDED DRAIN FABRIC FACING BACKFILL - PRIMARILY FOR PROTECTION OF THE MEMBRANE

DETAIL SEALANT PW OR LM-95 APPLIED TO TERMINAL EDGE OF MEMBRANE



3/4" FILLET OF DETAIL SEALANT PW OR LM-95 APPLIED TO INSIDE CORNERS VERTICALLY AND HORIZONTALLY TO RAW CONCRETE - ALLOW DETAIL SEALANT PW TO CURE FOR 2 HOURS PRIOR TO SHEET APPLICATION

WATERSTOP PER MANUFACTURES RECOMMENDATIONS - BY OTHERS

TOP OF INTERIOR FLOOR HEIGHT 12" AND UNDER FROM TOP OF FOOTER - WATERPROOF AS SHOWN - IF FOOTER IS POURED IN PLACE FOOTER MEMBRANE MUST BE CARRIED OUT 12" AND TERMINATED WITH TERMINATION BAR AND SEALED WITH DETAIL SEALANT PW OR LM-95

12" STRIP OF DETAIL TAPE APPLIED TO INSIDE AND OUTSIDE CORNERS - PREPARE SUBSTRATE WITH 650 LT LIQUID ADHESIVE OR CALIFORNIA SEALANT AT A RATE OF 250 - 300 SF/GAL OR 650 WB LIQUID ADHESIVE AT A RATE OF 350 - 400 SF/GAL

WP9

SECTION @ FOOTER WATERPROOFING - TOP OF INTERIOR FLOOR IS 12" AND UNDER FROM TOP OF FOOTER

SPECIAL NOTE: IF ADHESIVE IS REQUIRED FOR SEAMS OR ENDLAPS DO NOT USE 650 WB LIQUID ADHESIVE

© POLYGUARD PRODUCTS, INC.
MATERIALS SEPARATED FOR CLARITY

The information provided is based on data and knowledge considered to be true and accurate and is offered for the users' consideration, investigation and verification, but we do not warrant the results to be obtained. Please read all data sheets, statements, recommendations or suggestions in conjunction with our conditions of sale, which apply to all goods supplied by us.	NOT TO SCALE
	EFFECTIVE DATE: 07/01/2019
	SUPERCEDES: 07/17/2014