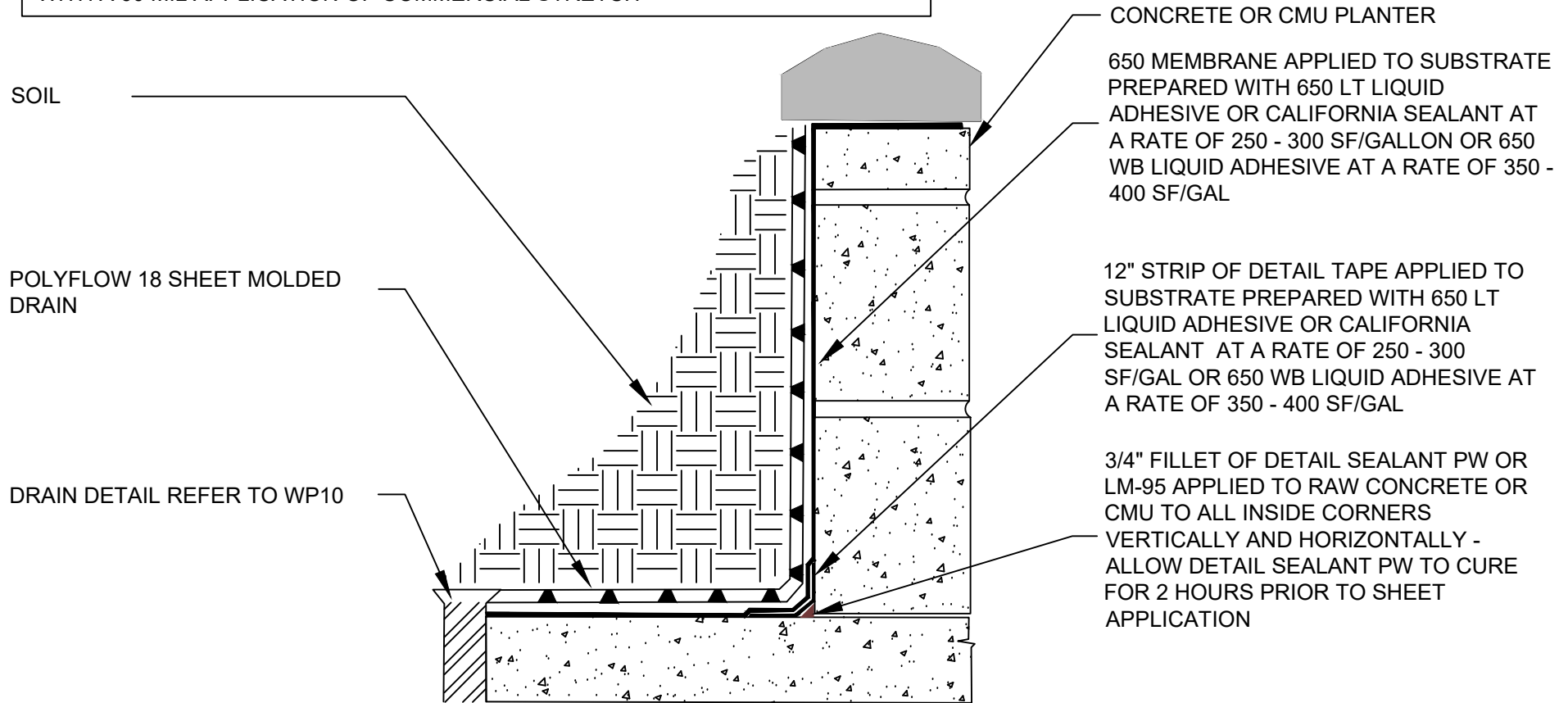


BUILD CMU WALLS WITH JOINTS ON THE WATERPROOFING SIDE STRUCK FLUSH WITH THE FACE OF THE CMU. EITHER PARGE COAT OR PREPARE THE SURFACE WITH A 60 MIL APPLICATION OF COMMERCIAL STRETCH



WP2

## SECTION@ POURED CONCRETE OR CMU PLANTER WATERPROOFING

**SPECIAL NOTE: IF ADHESIVE IS REQUIRED FOR SEAMS OR ENDLAPS DO NOT USE 650 WB LIQUID ADHESIVE**

© POLYGUARD PRODUCTS, INC.  
MATERIALS SEPARATED FOR CLARITY

Polyguard Products, Inc.  
P.O. Box 755 - Ennis, TX 75119  
Phone: 214-515-5000  
Web Site - [www.polyguard.com](http://www.polyguard.com)

The information provided is based on data and knowledge considered to be true and accurate and is offered for the users' consideration, investigation and verification, but we do not warrant the results to be obtained. Please read all data sheets, statements, recommendations or suggestions in conjunction with our conditions of sale, which apply to all goods supplied by us.	NOT TO SCALE
	EFFECTIVE DATE: 07/01/2019
	SUPERCEDES: 07/17/2014